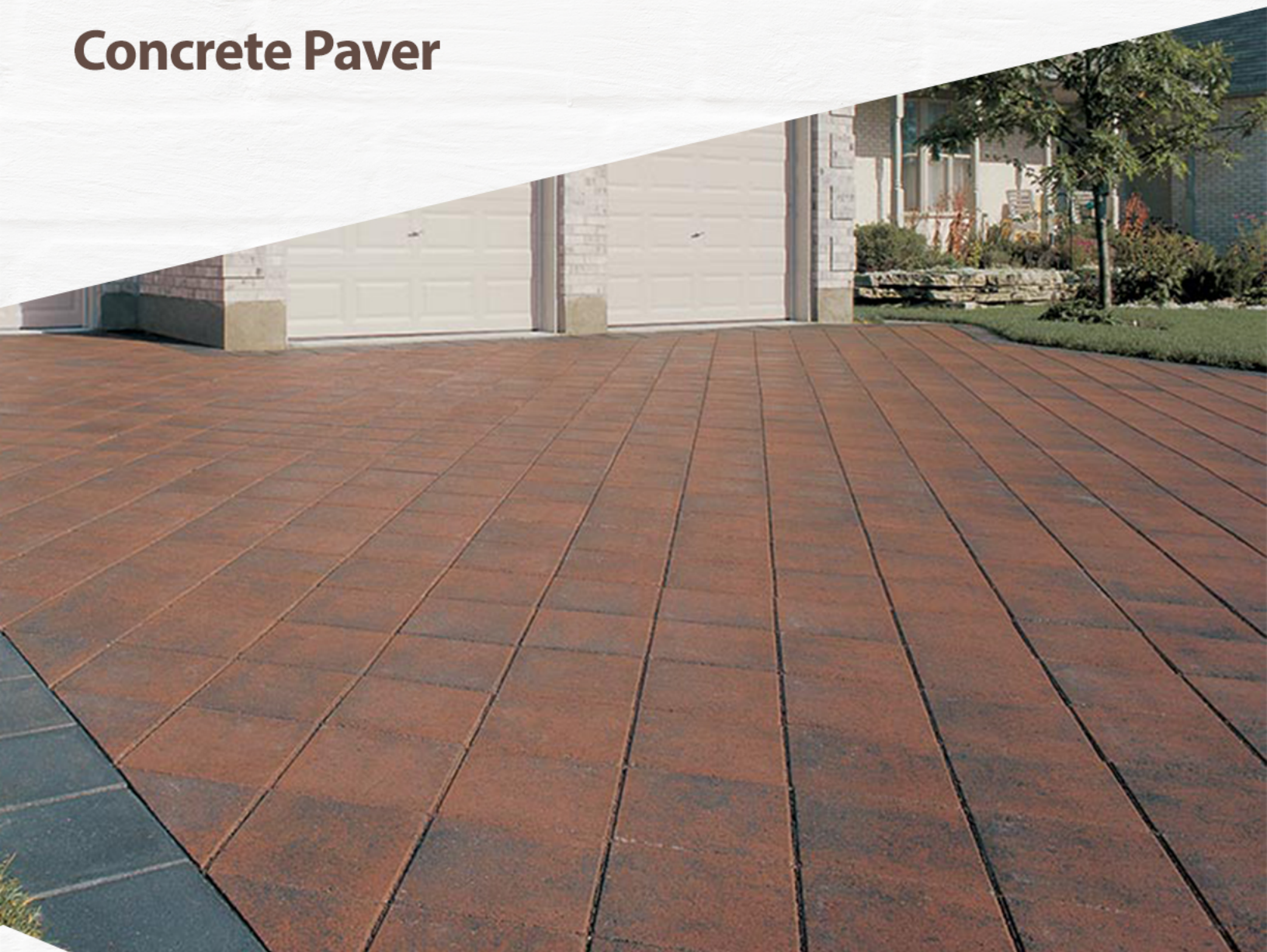


HANDY

Concrete Paver



Installation Guide



www.vanbeeks.com

6 cm Handy Paver

6 cm Handy Pavers come in 8 different colours. Mix and match to make patterns on your driveway or walkway. A contemporary look, efficient installation, and economical price, we don't call them Handy for nothing!

Versatile and economical



30 x 30 x 6 cm
(11.8 x 11.8 x 2.4 in)
Coverage: 0.96 sq. ft.
114 pieces per bundle
27 lbs each
3,078 lbs per bundle



Autumn Gold



Charcoal



Natural



Sahara



Red



Brown



Shadow Blend



Red Range

Make all colour selections from actual samples

Prepare to do it right!

The best driveways and patios start with Triple H Paving stones, but it's important to install your pavers properly. **When laying your paving stones always take the time to create the proper base.**

1. Excavation

When excavating for your project consider these two things:

SOIL TYPE: Clay soil requires that you dig deeper before applying your base material.

HEAVY LOADS: Driveways hold heavy loads and therefore require deeper excavation.

2. Base Layer

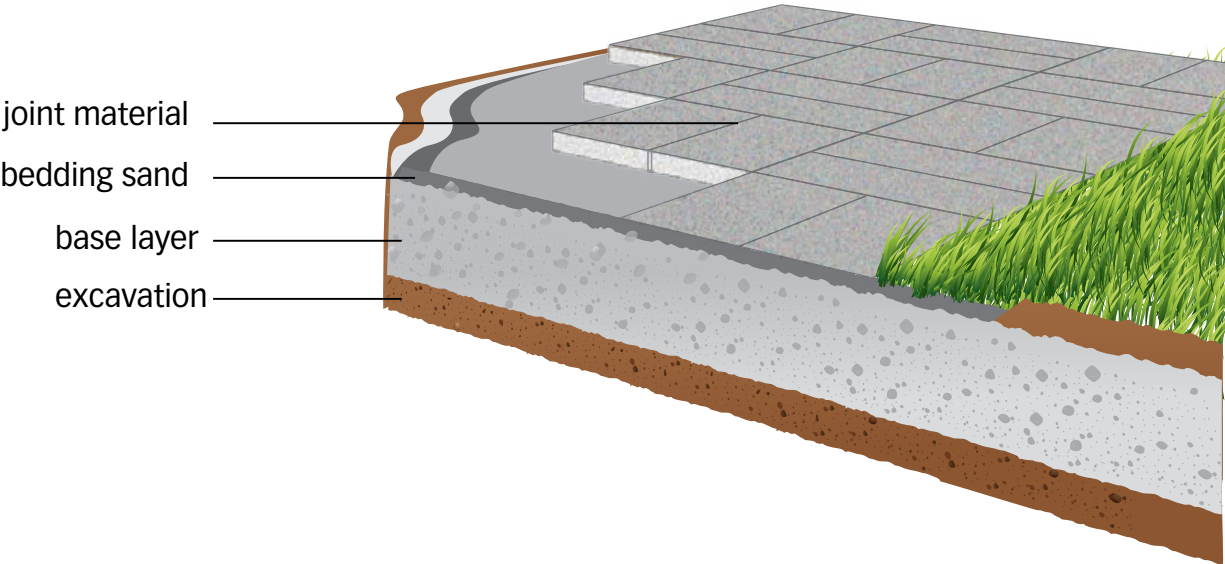
Consider load and drainage. Your base material must be strong enough to handle the load of its intended use, it must allow water to drain from the surface. Compact your base in layers and ensure that it extends at least 6 inches beyond the edge of your driveway or patio.

3. Bedding Sand

This layer is also important to allow water to drain from the surface. Smooth it out and ensure that it is deep enough so that you can lay the pavers perfectly! (We don't recommend limestone screening because it doesn't allow for proper drainage.)

4. Joint Material

To keep weeds out and to keep pavers in place choose an appropriate joint material. There are many types of joint material. We have designed the Highborn paver to work well and look great with polymeric sand. If you choose polymeric sand be sure to follow the directions provided on the package closely as some polymer can stain pavers.



Patio stone area specifications

30 x 15 cm
(approx. 11.8 x 5.9 in)
covers .48 sq ft.

Calculate area:
length x width divided by .48
= number of slabs required.

30 x 45 cm
(approx. 11.8 x 17.7 in)
covers 1.45 sq ft.

Calculate area:
length x width divided by 1.45
= number of slabs required.

60 x 40 cm
(approx. 16 x 24 in)
covers 2.6 sq ft.

Calculate area:
length x width divided by 2.6
= number of slabs required.

60 x 75 cm
(approx. 24 x 29.5 in)
covers 4.85 sq ft.

Calculate area:
length x width divided by 4.85
= number of slabs required.

30 x 30 cm
(approx. 11.8 x 11.8 in)
covers .96 sq ft.

Calculate area:
length x width divided by .96
= number of slabs required.

50 x 50 cm
(approx. 20 x 20 in)
covers 2.7 sq ft.

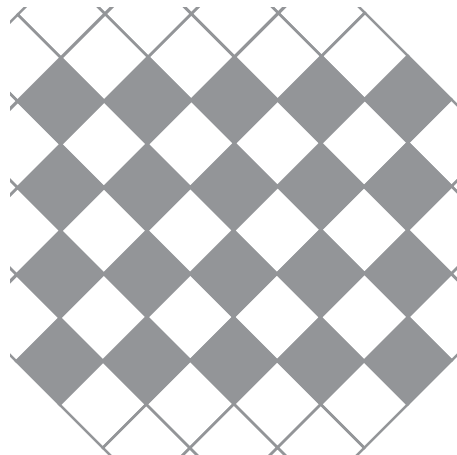
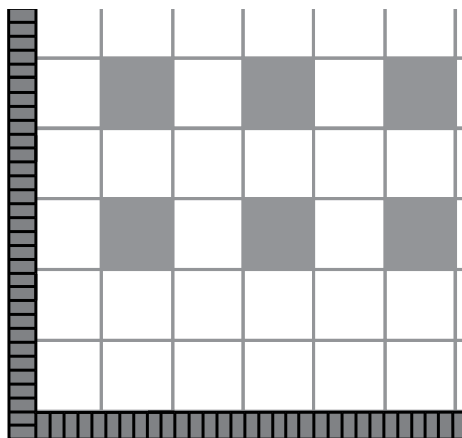
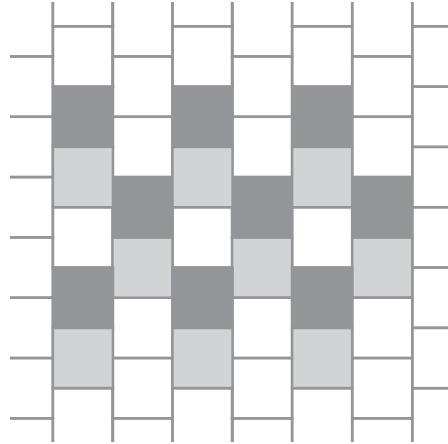
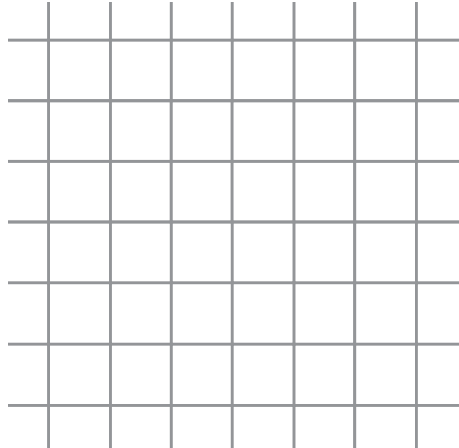
Calculate area:
length x width divided by 2.7
= number of slabs required.

60 x 60 cm
(approx. 24 x 24 in)
covers 4 sq ft.

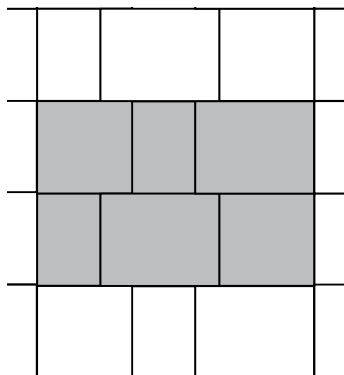
Calculate area:
length x width divided by 4
= number of slabs required.

Laying Patterns

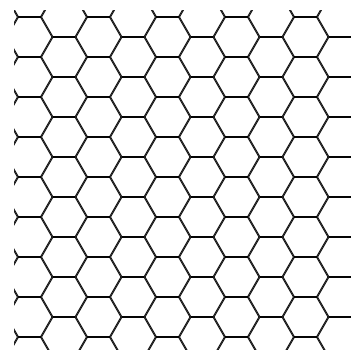
Brick Pattern, Castlestone, DiamondCast, Euro Pattern, Exposed Aggregate, Handy Pavers (4cm & 6 cm), Terra Square



Carrera Stone



Hexagon Paver



Use one size or combine sizes.