

PROMA 3XL (60MM)

Concrete Slab



Installation Guide



www.vanbeeks.com



60MM



PROMA 3XL

DIMENSIONS

(A)



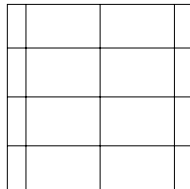
PROMA 3XL

2 3/8" x 32" x 48"

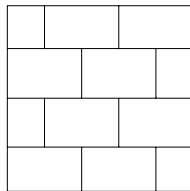
60mm x 812mm x 1219mm

INSTALLATIONS

*Inspirations only



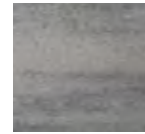
LINEAR



LINEAR

COLORS

STANDARD



ASH
CHARCOAL

PREMIUM



OKA BEIGE



SKY GREY



TRUFFLE

*SPECIAL ORDER

PRESTIGE*



MIST

WEIGHT

3050 lbs

SPECIFICATIONS

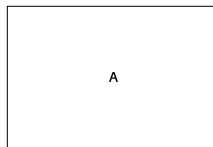
10 rows

10.66 ft² per row

106.6 ft² per skid

40 lin.ft per skid

PALETTE / SKID



*Prestige: A color that must be meticulously maintained and used in a specific environment to preserve its appearance. See warranty.

Installation

Slabs

IMPORTANT:
DO NOT USE A VIBRATING
PLATE DURING TILE
INSTALLATIONS



*ACCORDING TO ICPI RECOMMENDATION

1. EXCAVATION

- A. First and foremost, be sure to contact all water, electric and gas utilities to determine the location of any cables, wires or pipes in the area to be excavated.
- B. Be certain that your excavation is on a slant to ensure proper drainage. We suggest a minimum slope of 2 degrees (2,5 cm par 2,5 meter) (1 inch for every 8 feet)
- C. The contour of the excavation must exceed the surface to be paved by at least 12 inch. The depth of the excavation depends largely on the composition of your soil. These steps and the use of borders will provide maximal stability.
- D. Level the bottom of the surface using a rake. No matter what the type of original soil, avoid compacting.

2. FOUNDATION

- A. Spread stone required according to ASTM no.2 in successive 4 inch intervals and compact. This is the sub base aggregates. At this point install drainage if required.
- B. Spread stone required according to ASTM no.57 in successive 4 inch intervals and compact. This is the base aggregates.
- C. It is important to ensure that no contamination of soil occurs during the whole process.

3. STONE BEDDING

- A. The preparation and levelling of the stone bedding is the final step before the installation of the paving stones.
- B. Spread between 25 - 50 mm (1 to 2 inches) of aggregate according to ASTM no.8 keeping in mind that the stone bedding will be reduced by 3/8 inch after the compacting of the installed paving stones.
- C. Level the ASTM no.8 aggregate using two pipes of 1 inch in diameter and straight plate. The precision of this levelling will have a direct and important impact on the final result.

4. PAVING STONE INSTALLATION

- A. Place the paving stones according to the chosen design. Always begin with a 90 degree angle. Be sure to choose paving stones from various skids in order to obtain a more uniform result.
- B. Due to the raw materials used and the manufacturing process, there may be slight variation in colour from skid to skid. Verify the alignment at every row and make adjustments as needed.
- C. Should you need to make cuts, use a mini-guillotine or cement saw. The use of security goggles is recommended when cutting. Cuts should be lightly slanted inwards in order to place the pavers with greater ease. Stone cutting should not be done in proximity to installed pavers because the dust caused can permanently stain the pavers.
- D. Upon completion of paver installation, it is suggested to spread a very fine aggregate on the entire work surface before compacting with a vibrating plate in a criss-cross pattern. In order for the surface to be uniform, it is important that the pavers be embedded solidly into the aggregate beneath.
- E. Once the installation of the pavers is finished, it is suggested to spread sand across the surface before passing the vibrating plate 2-3 times in both directions to prevent disalignment of the pavers. The more the pavers are sunk into the stone bed, the more uniform the surface will be. Due to the oversize dimensions of the Proma Quadra and Proma 3XL pavers and slabs, a plate with teflon or rollers is necessary.

5. FILLING THE JOINTS

- A. Spread the polymer sand on the pavers and sweep in between joints in all directions.
- B. Sweep to remove excess sand.

*IMPORTANT: RINOX RECOMMENDATIONS FOR MEGA SLABS

Foundation: Backfill the excavated surface with 3/4 inch net stone or larger, if necessary to stabilize the soil.

Base layer: Spread between 15-25 mm (5/8 and 1 inch) of crushed stone 2-4 mm.

Filling the joints: Complete the look by adding polymeric sand. In order for it to penetrate between the joints, sweep the surface in all directions.