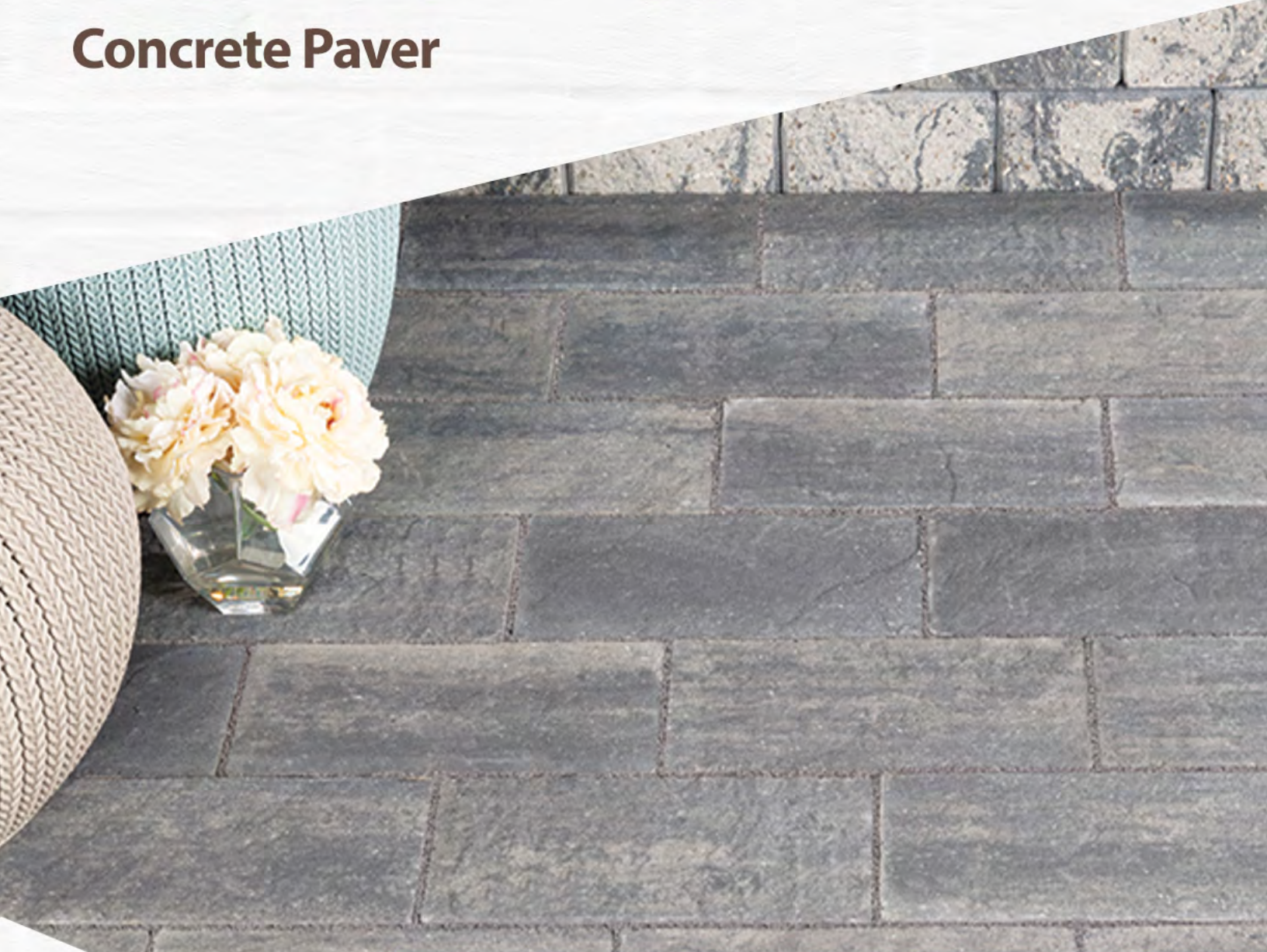


RICHMOND 50

Concrete Paver

BWS BEST WAY
STONE®



Installation Guide

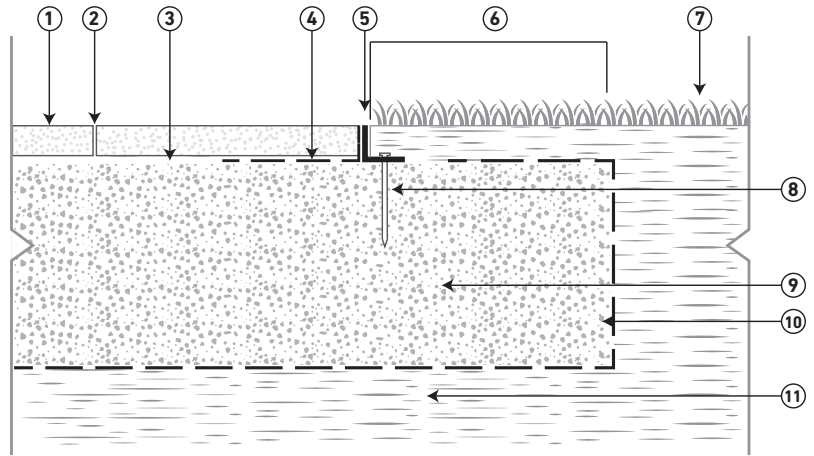
VB
VAN BEEK'S
LANDSCAPE SUPPLY

www.vanbeeks.com

INSTALLATION GUIDES - SLABS & PAVERS

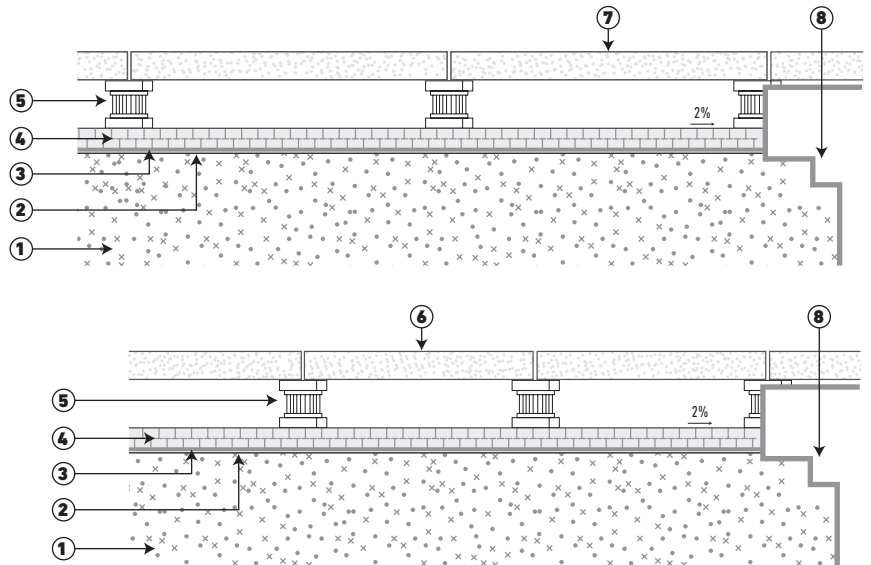
SLAB INSTALLATION TYPICAL CROSS SECTION

- 1 Best Way Stone® precast concrete slab 1 3/4" to 2" (45 to 50mm)
- 2 Sand joint fill
- 3 Bedding Sand 1" (25mm)
- 4 Geotextile 12" (300mm) wide
- 5 Plastic edge
- 6 Extra width equal to foundation thickness
- 7 Lawn
- 8 Nail
- 9 Compacted aggregate base 0 3/4" (0-20mm)
- 10 Geotextile
- 11 Subgrade



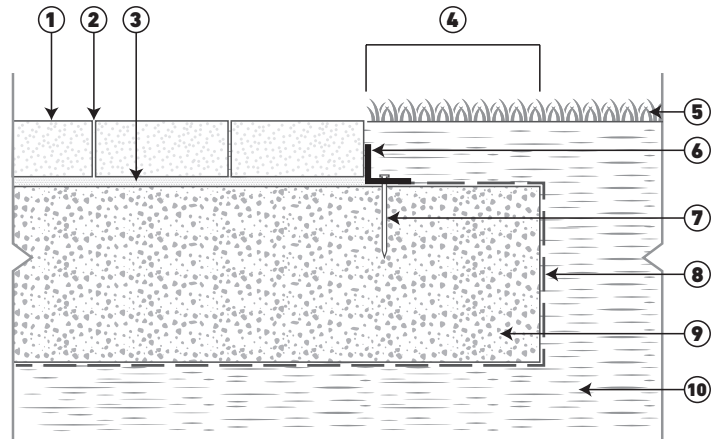
SLABS ON PEDESTAL SET

- 1 Roof deck
- 2 Waterproof membrane
- 3 Protection board
- 4 Rigid insulation
- 5 Adjustable pedestal
- 6 Best Way Stone® precast concrete slab 1 3/4" to 2 1/2" (45-65mm) thickness conforming to ASTM C 1782 and CSA A231.1
- 7 Best Way Stone® Trevista 50 slabs, 2" (50mm) thickness conforming to ASTM C 1782 and CSA A231.1
- 8 Roof drain




TYPICAL PAVER CROSS SECTION WITH PLASTIC EDGE

- 1 Best Way Stone® precast concrete paver 2 3/8" (60mm) thick min.
- 2 Sand joint fill
- 3 Bedding Sand 1" (25mm)
- 4 Extra width equal to foundation thickness
- 5 Lawn
- 6 Plastic edge
- 7 Nail
- 8 Geotextile
- 9 Compacted aggregate base 0 3/4" (0-20mm)
- 10 Subgrade

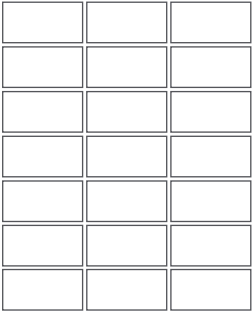


RICHMOND 50

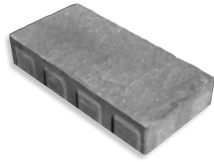
SIGNATURE SERIES SLAB / 50MM /  



BUNDLE OVERVIEW



UNIT



6.5 x 13 x 2 in
165 x 330 x 50 mm
Units/bundle: 252
Units/layer: 21

NOTES

For pedestrian use only. Can be used on its own, or as an accent and/or border for 50mm line of slabs. Subtle textured surface provides striking interest.

Plate tamper not recommended.

BUNDLE SPECIFICATIONS

IMPERIAL

METRIC

	IMPERIAL	METRIC
Coverage	147.6 ft ²	13.65 m ²
Weight	3542 lbs	1606.5 kg
Layers	12	
Coverage per layer	12.3 ft ²	1.14 m ²
Lineal coverage	136.5 ft / 273 ft	41.55 m / 83.1 m
Lineal coverage per layer	11.38 ft / 22.75 ft	3.46 m / 6.93 m

COLOURS

Glacier Creek
Grey Mix
Ultra Black

PATTERNS

